



UNIWORLD®

Innovating the Future of Security.

Advanced Surveillance
Assured Safety



IP CAMERA



NVR



DVR



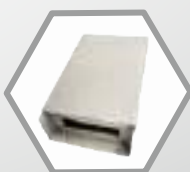
HD CAMERA



4G WIFI



POE



SMPS



About Us.

Introduction

Surveillance means the close observation of a person or group, especially those under suspicion, or the act of observing or the condition of being observed. In the context of a developing country like India, significant changes have been made in Information Technology policies, with many more to come. As the IT sector grows, so do surveillance technologies such as internet surveillance, CCTV surveillance, telephone surveillance, and email surveillance. This is just the beginning; in the next 3-5 years, the demand for CCTV and improved technologies is expected to skyrocket.

Our Philosophy and Future Horizon

Our Philosophy

At **Uniworld Vision Pvt Ltd**, our philosophy is rooted in our unwavering commitment to innovation, quality, and customer satisfaction. **With over 15 years of experience** in the security systems industry, we have built a reputation for delivering high-quality, affordable surveillance solutions that meet the evolving needs of our clients. Our approach is guided by several core principles:

- **Innovation** : We continuously adopt and integrate the latest technologies to stay ahead of the curve and provide our clients with cutting-edge solutions.
- **Quality** : Our dedication to quality ensures that every product we offer meets the highest standards of performance and reliability.
- **Customer Satisfaction** : We prioritize our customers' needs and strive to exceed their expectations with exceptional service and support.
- **Value for Money** : We are committed to providing high-quality security solutions at competitive prices, ensuring that advanced security is accessible to everyone.

These principles drive our daily operations and strategic decisions, guiding us toward achieving our long-term goals and maintaining our position as a leader in the security systems industry.

AHD CAMERA & DVR

UV-AHD-DA24T2

2.4MP HD IR DOME CAMERA 20 MTR



Features

- 2.4MP HD CMOS Image Sensor
- Max 25/30fps@Resolution (1920*1080p)
- 3.6mm fixed lens
- OSD Menu available@DWDR, BLC,AGC
- Support AHD, CVI, TVI and CVBS Formt
- Fine IR LED's range 20 Mtr
- Weatherproof camera

UV-AHD-TA24T2

2.4MP HD IR BULLET CAMERA 20 MTR



Features

- 2.4MP HD CMOS Image Sensor
- Max 25/30fps@Resolution (1920*1080p)
- 3.6mm fixed lens
- OSD Menu available@DWDR, BLC,AGC
- Support AHD, CVI, TVI and CVBS Formt
- Fine IR LED's range 20 Mtr
- Weatherproof camera

UV-AHD-DA24T2-C

2.4MP FULL HD IR GUARD+DOME CAMERA 20 MTR



Features

- 1/3",2.4 Megapixels CMOS Sensor
- Lens 3 Megapixel (3.6mm Fixed Lens)
- Color: 0.001Lux@ (F1.2, AGC ON)
- Color Night Vision Upto 20 Meters
- Warm Starlight Array
- 3D Noise Reduction, Multiple Angle
- 12 Volt, Weather Resistant Plastic Body

UV-AHD-TA24T2-C

2.4MP FULL HD IR GUARD+BULLET CAMERA 20 MTR



Features

- 1/3",2.4 Megapixels CMOS Sensor
- Lens 3 Megapixel (3.6mm Fixed Lens)
- Color: 0.001Lux@ (F1.2, AGC ON)
- Color Night Vision Upto 20 Meters
- Warm Starlight Array
- 3D Noise Reduction, Multiple Angle
- 12 Volt, Weather Resistant Plastic Body

UV-AHD-DA24T2-CA

2.4MP FULL HD IR GUARD+AUDIO DOME CAMERA 20 MTR



Features

- 2.4MP HD CMOS Image Sensor
- Max 25/30fps@Resolution (1920*1080p)
- 3.6mm fixed lens
- OSD Menu available@DWDR, BLC,AGC
- Support AHD, CVI, TVI and CVBS Formt
- Fine IR LED's range 20 Mtr
- Weatherproof camera

UV-AHD-TA24T2-CA

2.4MP FULL HD IR GUARD+AUDIO BULLET CAMERA 20 MTR



Features

- 2.4MP HD CMOS Image Sensor
- Max 25/30fps@Resolution (1920*1080p)
- 3.6mm fixed lens
- OSD Menu available@DWDR, BLC,AGC
- Support AHD, CVI, TVI and CVBS Formt
- Fine Warm LED's range 20 Mtr Color
- Weatherproof camera

UV-AHD-DA24T2-CA-CV

2.4MP FULL HD IR GUARD+AUDIO DOME CAMERA 20 MTR



Features

- 2.4MP HD CMOS Image Sensor
- Max 25/30fps@Resolution (1920*1080p)
- 3.6mm fixed lens
- OSD Menu available@DWDR, BLC,AGC
- Support AHD, CVI, TVI and CVBS Formt
- Fine Warm LED's range 20 Mtr Color
- Weatherproof camera

UV-AHD-TA24T2-CA-CV

2.4MP FULL HD IR GUARD+AUDIO BULLET CAMERA 20 MTR



Features

- 2.4MP HD CMOS Image Sensor
- Max 25/30fps@Resolution (1920*1080p)
- 3.6mm fixed lens
- OSD Menu available@DWDR, BLC,AGC
- Support AHD, CVI, TVI and CVBS Formt
- Fine Warm LED's range 20 Mtr Color
- Weatherproof camera

5 MP HD CAMERA

UV-AHD-DA50T2-C

5MP FULL HD IR GUARD+DOME CAMERA 20 MTR



Features

- 5MP HD CMOS Image Sensor
- Max 25/30fps@Resolution (2560*1920p)
- 3.6mm fixed lens 5MP Lens
- OSD Menu available@DWDR, BLC,AGC
- Compatible with AH , CVI, TVI and CVBS Formt
- Warm light day & night full color vision
- Warm LED's range 20 Mtr Colour
- Weatherproof camera

UV-AHD-TA50T2-C

5MP FULL HD IR GUARD+BULLET CAMERA 20 MTR



Features

- 5MP HD CMOS Image Sensor
- Max 25/30fps@Resolution (2560*1920p)
- 3.6mm fixed lens 5MP Lens
- OSD Menu available@DWDR, BLC,AGC
- Compatible with AH , CVI, TVI and CVBS Formt
- Warm light day & night full color vision
- Warm LED's range 20 Mtr Colour
- Weatherproof camera

UV-AHD-DA50T2-CA

5MP FULL HD IR GUARD+AUDIO DOME CAMERA 20 MTR



Features

- 5MP HD CMOS Image Sensor
- Max 25/30fps@Resolution (2560*1920p)
- 3.6mm fixed lens 5MP Lens
- OSD Menu available@DWDR, BLC,AGC
- Compatible with AH , CVI, TVI and CVBS Formt
- Warm light day & night full color vision
- Warm LED's range 20 Mtr Colour
- Weatherproof camera

UV-AHD-TA50T2-CA

5MP FULL HD IR GUARD+AUDIO BULLET CAMERA 20 MTR



Features

- 5MP HD CMOS Image Sensor
- Max 25/30fps@Resolution (2560*1920p)
- 3.6mm fixed lens
- OSD Menu available@DWDR, BLC,AGC
- Compatible with AH , CVI, TVI and CVBS Formt
- Warm light day & night full color vision
- Warm LED's range 20 Mtr Colour
- Weatherproof camera

UV-AHD-TA50T5-C

5MP HD IR BULLET COLUR CAMERA 50 MTR



Features

- 5MP HD CMOS Image Sensor
- Max 25/30fps@Resolution (2560*1920p)
- 3.6mm fixed lens 5MP Lens
- OSD Menu available@DWDR, BLC,AGC
- Compatible with AH , CVI, TVI and CVBS Formt
- Warm LED's range 20 Mtr Color
- Weatherproof camera

UV-DVR-1004F

5MP DVR 4CH



Features

- H.265+Compression Technique
- Pentabrid DVR
- 4Ch Video Recording
- 4Ch Audio In / 1Ch RCA Out
- Support, Android, iPhone, Mac.
- LINUX Operating system.
- IVA Video Analytics
- Line Crossing
- Object Detection.
- Up to 8TB SATA HDD*1.

UV-DVR-1008F

5MP DVR 8 CH



Features

- H.265+Compression Technique
- Pentabrid DVR
- 8Ch Video Recording
- 8Ch Audio In / 1Ch RCA Out
- Support, Android, iPhone, Mac.
- LINUX Operating system.
- IVA Video Analytics
- Line Crossing
- Object Detection.
- Up to 8TB SATA HDD*1.

UV-DVR-1016F

5 MP DVR 16 CH



Features

- H.265+Compression Technique
- Pentabrid DVR
- 16Ch Video Recording
- 16Ch Audio In / 1Ch RCA Out
- Support, Android, iPhone, Mac.
- LINUX Operating system.
- IVA Video Analytics
- Line Crossing
- Object Detection.
- Up to 8TB SATA HDD*1/2.

IP CAMERA SEIRES

UV-IPC-DA40T2-A

4MP IP IR AUDIO DOME CAMERA



Features

- 4MP IP CMOS Image Sensor
- Max 25/30fps@4MP(2048*1536p)
- 3.6mm fixed lens with built-in Mic
- H.265+ Dual Streaming
- Onvif Protocol, IR range 30 Mtr.
- PoE and 12v support
- Weatherproof camera

UV-IPC-TA40T2-A

4MP IP IR AUDIO BULLET CAMERA



Features

- 4MP IP CMOS Image Sensor
- Max 25/30fps@4MP(2048*1536p)
- 3.6mm fixed lens with built-in Mic
- H.265+ Dual Streaming
- Onvif Protocol, IR range 30 Mtr.
- PoE and 12v support
- Weatherproof camera

UV-IPC-DA40T2-CA

4MP IP GUARD+AUDIO DOME CAMERA 20 MTR



Features

- 1/3", 4.0 Megapixels Sensor
- 3.6mm/6mm(Optional) Fied lens
- H.265/H.265+ Encoding Formats
- Inbuilt Audio Mic. Connection
- Support Onvif, Access Third party
- 12 DC, PoE Support
- Weatherproof camera

UV-IPC-TA40T2-CA

4MP IP GUARD+AUDIO BULLET CAMERA 20 MTR



Features

- 4MP IP CMOS Image Sensor
- Max 25/30fps@4MP Resolution
- 3.6mm fixed lens with built-in Mic
- H.265+ Dual Streaming
- Onvif Protocol, Color range 30 Mtr.
- PoE and 12v support
- Weatherproof camera

UV-IPC-DA40T2-CA-M

4MP IP GUARD+AUDIO VANDAL DOME CAMERA 20 MTR



Features

- 1/3", 4.0 Megapixels Sensor
- Max 25/30fps@4MP Resolution
- 3.6mm fixed lens with built-in Mic
- H.265+ Dual Streaming
- Onvif Protocol, Color range 20 Mtr.
- PoE and 12v support
- Weatherproof camera

UV-IPC-TA40T2-CA-M

4MP IP GUARD+AUDIO VANDAL BULLET CAMERA 20 MTR



Features

- 4MP IP CMOS Image Sensor
- Max 25/30fps@4MP Resolution
- 3.6mm fixed lens with built-in Mic
- H.265+ Dual Streaming
- Onvif Protocol, Color range 20 Mtr.
- PoE and 12v support
- Weatherproof camera

UV-IPC-DA50T2-CA

5MP IP DOME COLOR WITH AUDIO CAMERA 20 MTR



Features

- 1/3", 5.0 Megapixels Sensor
- Max 25/30fps@5MP Resolution
- 3.6mm fixed lens with built-in Mic
- H.265+ Dual Streaming
- Onvif Protocol, Color range 20 Mtr.
- PoE and 12v support
- Weatherproof camera

UV-IPC-TA50T2-CA

5MP IP BULLET COLOR WITH AUDIO CAMERA 20 MTR



Features

- 5MP IP CMOS Image Sensor
- Max 25/30fps@5MP Resolution
- 3.6mm fixed lens with built-in Mic
- H.265+ Dual Streaming
- Onvif Protocol, Color range 20 Mtr.
- PoE and 12v support
- Weatherproof camera

UV-IPC-TA50T3-CA

5MP IP DOME COLOR WITH AUDIO CAMERA 30 MTR



Features

- 5MP HD CMOS Image Sensor
- Max 25/30fps@4MP Resolution
- 6mm fixed lens with built-in Mic
- H.265+ Dual Streaming
- Onvif Protocol, Color range 30 Mtr.
- PoE and 12v support
- Weatherproof camera

UV-IPC-TA50T3-CA-M

5MP IP BULLET COLOR WITH AUDIO CAMERA 30 MTR



Features

- 5MP IP CMOS Image Sensor
- Max 25/30fps@4MP Resolution
- 6mm fixed lens with built-in Mic
- H.265+ Dual Streaming
- Onvif Protocol, Color range 30 Mtr.
- PoE and 12v support
- Weatherproof camera

UV-IPC-TA50T5-CA

5MP IP BULLET COLOR WITH AUDIO CAMERA 50 MTR



Features

- 5MP IP CMOS Image Sensor
- Max 25/30fps@4MP Resolution
- 8mm fixed lens with built-in Mic
- H.265+ Dual Streaming
- Onvif Protocol, Color range 30 Mtr.
- PoE and 12v support
- Weatherproof camera

UV-IPC-DA40T2-CWT

4MP IP DOME COLOR WITH TWO WAY AUDIO CAMERA 30 MTR



Features

- 5MP IP CMOS Image Sensor
- Max 25/30fps@4MP Resolution
- 3.6mm fixed lens with built-in Mic
- H.265+ Dual Streaming
- Onvif Protocol, Color range 30 Mtr.
- PoE and 12v support
- Weatherproof camera
- Two Way Audio

NVR SEIRES

UV-NVR-2009

9 CHANNEL NVR



Features

- Hi-Silicon processor
- 9Ch Video Recording
- 9Ch Audio In / 1Ch RCA Out
- 2*USB2.0 interface
- 1 SATA upto 6TB
- IP-PTZ Supports
- ONVIF Supported
- 1*RJ45,100Mbps Ethernet
- Support, Android, iPhone, Mac.
- H.265/H.265+ Dual streaming

UV-NVR-2010

10 CHANNEL NVR



Features

- Hi-Silicon processor
- 10Ch Video Recording
- 10Ch Audio In / 1Ch RCA Out
- 2*USB2.0 interface
- 1 SATA upto 6TB
- IP-PTZ Supports
- ONVIF Supported
- 1*RJ45,100Mbps Ethernet
- Support, Android, iPhone, Mac.
- H.265/H.265+ Dual streaming

UV-NVR-2016

16 CHANNEL NVR



Features

- Hi-Silicon processor
- 16Ch Video Recording
- 16Ch Audio In / 1Ch RCA Out
- 2*USB2.0 interface
- 1 SATA upto 6TB
- IP-PTZ Supports
- ONVIF Supported
- 1*RJ45,100Mbps Ethernet
- Support, Android, iPhone, Mac.
- H.265/H.265+ Dual streaming

UV-NVR-4K2032

32 CHANNEL NVR



Features

- Hi-Silicon processor
- 32Ch Video Recording
- 32Ch Audio In / 1Ch RCA Out
- 2*USB2.0 interface
- 4 SATA upto 6TB
- IP-PTZ Supports
- ONVIF Supported
- 1*RJ45,100Mbps Ethernet
- Support, Android, iPhone, Mac.
- H.265/H.265+ Dual streaming

PTZ CAMERA

UV-IPC-TA50VFL

5MP IP BULLET COLOR WITH AUDIO CAMERA 60 MTR



Features

- 5MP IP CMOS Image Sensor
- Max 25/30fps@5MP Resolution
- 2.7-13.5mm fixed lens with built-in Mic
- H.265+ Dual Streaming
- Onvif Protocol, Color range 30 Mtr.
- PoE and 12v support
- Weatherproof camera

UV-PTZB-TA40VFL-A-STL

4MP IP PTZ BULLET CAMERA 18X



Features

- 1/3 inch 5 megapixel CMOS sensor
- Supports H.265+, H.265, and H.264 encoding
- Support soft photosensitivity
- Support intelligent analysis:
- Support voice intercom, voice broadcasting
- Support Onvif

UV-PTZ-4020X-CVA

4MP 20X IP DUAL AUDIO PTZ 100 MTR



Features

- Image sensor 4 megapixel, 1/3 "CMOS
- Video Processing H. 265+/H.265/H.264
- Main stream: 25FPS @
- Sub stream: D1, VGA, 640 × 360;
- Audio interface Audio linear 1 inputand
- IR Distance 100mtr.
- Lens Size 4.7mm-56.4mm ONVIF

UV-PTZ-5036X-CVA

5MP 36X IP DUAL AUDIO PTZ 100 MTR



Features

- Image sensor 5 megapixel, 1/3 "CMOS
- Video Processing H. 265+/H.265/H.264
- Main stream: 25FPS @
- Sub stream: D1, VGA, 640 × 360;
- Audio interface Audio linear 1 inputand
- IR Distance 150mtr.
- Lens Size 4.7mm-94mm ONVIF

4G - WIFI CAMERA

UV-WPT-20A

2MP WIRELESS PT CAMERA



Features

- Image Sensor 2mp 1/3" Cmos Sensor
- Lens 4mm Fixed Lens, Two-way Audio
- Main Stream : 2304*1296 ; sub Stream : 640x360
- Compression H.264/h.265, support Dual Stream
- Motion Detection With eal Time Alarm
- Easy To Access Mobile App & Pc Monitoring
- Support Cloud Storage (up To256g)
- Weatherproof Camera App Ippro

UV-WPT-30A

3MP WIRELESS PT CAMERA



Features

- Image Sensor 3mp 1/3" Cmos Sensor
- Lens 4mm Fixed Lens, Two-way Audio
- Main Stream : 2304*1296 ; sub Stream : 640x360
- Compression H.264/h.265, support Dual Stream
- Motion Detection With eal Time Alarm
- Easy To Access Mobile App & Pc Monitoring
- Support Cloud Storage (up To256g)
- Weatherproof Camera App Ippro

UV-WPT-30T2-CA

3MP SMART WI-FI MINI PT CAMERA



Features

- Image Sensor 3mp 1/3" Cmos Sensor
- Lens 4mm Fixed Lens, Two-way Audio
- Main Stream : 2304*1296 ; sub Stream : 640x360
- Compression H.264/h.265, support Dual Stream
- Motion Detection With eal Time Alarm
- Easy To Access Mobile App & Pc Monitoring
- Support Cloud Storage (up To256g)
- Weatherproof Camera App Ippro

UV-803+PRO

4G/5G ROUTER



Features

- Plug & Play Operation
- Bandwidth: 40Mhz
- Power: 12VDC
- Antenna: Three
- LAN Port: One
- Led Light: Power & Network
- Sim Card: Nano
- EMEI Based
- High Speed Processing Unit
- For Industrial & Home Use

UV-4GC-DA30T2

3MP SMART 4G DOME ATC CAMERA



Features

- 3MP Dome (2304 x 1296) Resolution
- Built-in High Sensitivity Mic & Speaker
- Area Motion Detection,
- Raltime Notification on the Apali aation
- Mobile Notification on Human
- Support Micro SD Card upto 256GB
- Compression: H.264 / H.265 / H.265+
- 4G Essecloud.QR code for Easy Mobile/PC
- Alexa Support

UV-4GC-TA30T2

3MP SMART 4G BULLET ATC CAMERA



Features

- 3MP Bullet (2304 x 1296) Resolution
- Built-in High Sensitivity Mic & Speaker
- Area Motion Detection,
- Raltime Notification on the Apali aation
- Mobile Notification on Human
- Support Micro SD Card upto 256GB
- Compression: H.264 / H.265 / H.265+
- 4G Essecloud.QR code for Easy Mobile/PC
- Alexa Support

UV-4GPT-DA30T2-CA

3MP SMART 4G MINI PT CAMERA



Features

- PT Smart Mini PT 4G Camera
- Resolution 3MP 2304 x1296
- 4mm @ F1.6, View Angle, 30 Mtr.
- Main Stream 2304*1296 sub Stream 640x360
- Compression H.264/H.265/H.265 Dual Stream
- Motion Detection With eal Time Alarm
- Easy To Access Mobile App & Pc Monitoring
- Support Cloud Storage (up To256g)
- Weatherproof Camera App Ippro

UV-4GSLR-DA40T2-CA

4MP 4G SOLAR MINI PT CAMERA



Features

- 4MP PT Smart Mini PT 4G Solar Camera
- Resolution4MP:2560 x 1440
- Support two-way audio
- Built-In Battery Rechargeable Solar Pannel
- Support Micro SD Card Up to 256GB
- 4G Essecloud, scan the QR code to easily
- Compression : H.264 / H.265 / H.265+
- Support Micro SD Card Up to 128GB
- Weatherproof camera IP66

POWER SUPPLY

UV-PSW-401M

4-PORT SMPS 5 AMP/12V



Features

- Input Voltage 110-285V.AC, 0.5A
- Input Frequency 47-63Hz
- Output Voltage 12V. DC-A (Each Ch.)
- Short Circuit & Overload Protection
- Highly Integrated SMPS Switch I.C. Design
- Resetable Thermal Fuse For Each Channel

UV-PSW-801M

8-PORT SMPS 10 AMP/12V



Features

- Input Voltage 110-285V.AC, 0.5A
- Input Frequency 47-63Hz
- Output Voltage 12V. DC-A (Each Ch.)
- Short Circuit & Overload Protection
- Highly Integrated SMPS Switch I.C. Design
- Resetable Thermal Fuse For Each Channel

UV-PSW-P104-MB

4CH SMPS 5 AMP/12V



Features

- Input Voltage AC 150-275V
- Input Frequency 50Hz
- Input Current 200MA@230V
- Output Voltage 5 AMP DC12V-DC15V
- Output Current 1 AMP Max (Per ch.)
- Input Cord 2PIN

UV-PSW-P108-MB

8CH SMPS 10 AMP/12V



Features

- Input Voltage AC 150-275V
- Input Frequency 50Hz
- Input Current 200MA@230V
- Output Voltage 10 AMP DC12V-DC15V
- Output Current 1 AMP Max (Per ch.)
- Input Cord 2PIN

CCTV Cable 3+1 / CAT6

UV-CAB-70MTC

WIRE 70M CCTV COPPER



Features

- 3+1 CCTV Indoor Cabel
- Together Red, Yellow, Grey+ Co-axial Core
- Conductor Resistance at 20
- No of Video Core: One
- Color Video Code: Natural
- Color of Jacket: Black
- Color Jacketing: Whie
- Shielded: AL-Mylar

UV-CAB-90MTC

WIRE 90M CCTV COPPER



Features

- 3+1 CCTV Indoor Cabel
- Together Red, Yellow, Grey+ Co-axial Core
- Conductor Resistance at 20
- No of Video Core: One
- Color Video Code: Natural
- Color of Jacket: Black
- Color Jacketing: Whie
- Shielded: AL-Mylar

UV-CAB-ECA305

CAT-6 CCA 305 MTR

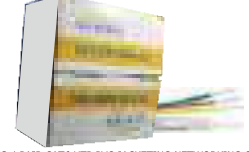


Features

- Frequency: 250 MHz
- Networks Supported: 1000BASE-TX
- Impedance: 100 ohms = 15%
- Delay Skew (max. per 100m): 45 ns
- Transmission: 1Gbps/10Gbps
- Number of Connectors: 4
- Cable Constructions: UTP or Shield
- Connector type : RJ45
- Cost: Expensive

UV-CAB-COP305-M

CAT-6 COPER 305 MTR



24AWG 4 PAIR CAT6 UTP PVC JACKETING NETWORKING CABLE

Features

- 24 AWG 4 Pair CAT6 UTP PVC Jacketing
- Networks Supported: 1000BASE-TX
- Impedance: 100 ohms = 15%
- Delay Skew (max. per 100m): 45 ns
- Transmission: 1Gbps/10Gbps
- Number of Connectors: 4
- Cable Constructions: UTP or Shield
- Connector type : RJ45
- Cost: Expensive

POE SWITCH

UV-POE-PS-204H

POE 4 PORT



Features

- 4*10/100Mbps PoE ports
- 2*10/100Mbps uplink port
- Support IEEE802.3af/at
- VLAN function
- Built-in power supply
- Maximum PoE power: 75W
- Power single port:30W
- distance up to 250m with
- Switching Capacity: 1.2Gbps
- Consumption: 75W(52V 1.44A)

UV-POE-PS-206H

POE 6 PORT



Features

- 6*10/100Mbps PoE ports
- 2*10/100Mbps uplink port
- Support IEEE802.3af/at
- VLAN function
- Built-in power supply
- Maximum PoE power: 78W
- Power single port:30W
- distance up to 250m with
- Switching Capacity: 1.2Gbps
- Consumption: 78W(52V 1.44A)

UV-POE-PS-209H

POE 9 PORT 100 MBPS



Features

- 9*10/100Mbps PoE ports
- 2*10/100Mbps uplink port
- Support IEEE802.3af/at
- VLAN function
- Built-in power supply
- Maximum PoE power: 120W
- Power single port:30W
- distance up to 250m with
- Switching Capacity: 1.2Gbps
- Consumption:120 W(52V 1.44A)

UV-POE-PS-208-UB

POE-8 PORT UPLINK GIGA



Features

- 8*10/100Mbps PoE ports
- 2*10/100/1000Mbps uplink port
- Support IEEE802.3af/at
- VLAN function
- Built-in power supply
- Maximum PoE power: 120W
- Power single port:30W
- distance up to 250m with
- Switching Capacity: 7.6Gbps
- Consumption: 120W(52V 2.3A)

UV-POE-PS-208-FB

POE-8 PORT FULL GIGA 120W



Features

- 8*10/1000Mbps PoE ports
- 2*10/1000Mbps uplink port
- 1SFP Port Support IEEE802.3af/at
- VLAN function
- Built-in power supply
- Maximum PoE power: 120W
- Power single port:30W
- distance up to 250m with
- Switching Capacity: 1.2Gbps
- Consumption: 120W(52V 1.44A)

UV-POE-PS-208-FB

POE-8 PORT FULL GIGA WITH SFP PORT 120W



Features

- 8*10/1000Mbps PoE ports
- 2*10/1000Mbps uplink port
- 1SFP Port Support IEEE802.3af/at
- VLAN function
- Built-in power supply
- Maximum PoE power: 120W
- Power single port:30W
- distance up to 250m with
- Switching Capacity: 1.2Gbps
- Consumption: 120W(52V 1.44A)

UV-POE-PS-216-G-1SFP



Features

- 16*10/1000Mbps PoE ports
- 2*10/1000Mbps uplink port
- 1SFP Port Support IEEE802.3af/at
- VLAN function
- Built-in power supply
- Maximum PoE power: 120W
- Power single port:30W
- distance up to 250m with
- Switching Capacity: 1.2Gbps
- Consumption: 120W(52V 1.44A)

UV-POE-PS-224-G-2SFP



Features

- 24*10/1000Mbps PoE ports
- 2*10/1000Mbps uplink port
- 2SFP Port Support IEEE802.3af/at
- VLAN function
- Built-in power supply
- Maximum PoE power: 160W
- Power single port:30W
- distance up to 250m with
- Switching Capacity: 1.2Gbps
- Consumption: 160W(52V 1.44A)

UV-RK2U

2U RACK FOLDEBULE



Features

- Designed for DVR/NVR Storage & Safety.
- Front Door with Acrylic Glass & Lock & Key.
- Side Panels, Top and Botom & Venntil ation Slots.
- Dual Tone Color for Elegant Aesthetic Loo s.
- Cable Entry Cutout on Both Side Covered with.
- Rubber Grommet, Wall Mounting Kit.
- Dimension (mm) 450 W 350 DI 140 H

UV-RK4U-2U

4U RACK



Features

- Designed for DVR/NVR Storage & Safety.
- Front Door with Acrylic Glass & Lock & Key.
- Side Panels, Top and Botom & Venntil ation Slots.
- Dual Tone Color for Elegant Aesthetic Loo s.
- Cable Entry Cutout on Both Side Covered with.
- Rubber Grommet, Wall Mounting Kit.
- Dimension (mm) 450 W 350 DI 240 H

PVC BOX 4*4

PVC BOX



Features

- SECURE FIRE PVC 4X4" Inch Fresh PVC
- Square Virgin Plastic Mou nting xes
- Set for CCTV Cameras Surveillance Security
- System Junction B xes Set
- for Surveillance CCTV Security Cameras

PVC BOX 5*5

PVC BOX



Features

- SECURE FIRE PVC 5X5" Inch Fresh PVC
- Square Virgin Plastic Mou nting xes
- Set for CCTV Cameras Surveillance Security
- System Junction B xes Set
- for Surveillance CCTV Security Cameras



UNIWORLD®

Innovating the Future of Security.



BIHAR



Azadnagar Road No 3,
Near Raja Marriage Hall,
Kankarbagh Patna,
Bihar - 800020
Mob. +91 73600 00121

JHARKHAND



P.P. Compound, Plot No. 1786,
Opposite Krishna Apartment,
Near Aata Chakki, Ranchi.
Jharkhand - 834001.
Mob. +91 73600 00122

NEPAL



Vishwakarma Chowk,
Ward No - 4,
Janakpurdham, Nepal.
Mob. : +977 98016 70952
Email : uniworldjanakpur2023@gmail.com