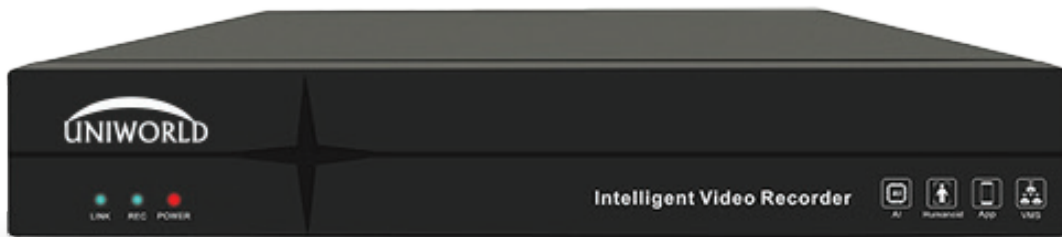


**PREMIUM SERIES**

**MODEL NO : UV-IVR-T236-150M**

**UNIWORLD PREMIUM 36 CH 4K IVR**  
with TWO SATA & 150 Mbps Bandwidth



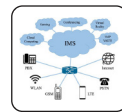
HIGH EFFICIENCY  
VIDEO CODING



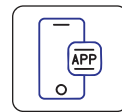
ONVIF  
SUPPORT



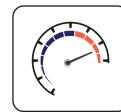
SMART LINK



IP MULTIMEDIA  
SUBSYSTEM (IMS)



APP



144/72 ( 36CH )  
150 Mbps



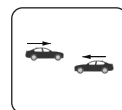
TWO WAY  
AUDIO



HUMAN  
DETECTION



VEHICLE  
DETECTION



RETROGRADE



VEHICLE  
DETECTION



2 SATA UPTO  
16TB

**INTRODUCTION**

36CH intelligent video recorder, support 36CH 4K IP camera input and output. Support IPC smart analysis: Line-crossing detection, Vehicle retrograde, Staff absence, Loitering, Area intrusion, Vehicle illegal parking. Support voice alarm function in various mode. Support modify the light mode of private protocol IPC. Support online upgrade and U disk upgrade our camera, support maximum 2pcs 16TB hard disk, 1 HDMI and 1 VGA output interface, 3 USB port, support mobile phone monitoring.

## SPECIFICATION :

|                          |   |         |          |          |      |       |       |       |
|--------------------------|---|---------|----------|----------|------|-------|-------|-------|
| System Structure         | Embedded LINUX design, pure hard decoding, watchdog, hard disk storage, HDMI HD display, IP network video access.   |         |          |          |      |       |       |       |
| Split Decoding           | 1   | 4       | 6        | 8        | 9    | 16    | 25    | 36    |
| Incoming Bandwidth       | 4K  | 4*1080P | 4MP+5*D1 | 4MP+7*D1 | 9*D1 | 16*D1 | 25*D1 | 36*D1 |
| Video                    | 150 Mbps  |         |          |          |      |       |       |       |
| Recording Resolution     | 1 HDMI output, 1 VGA output; Resolution: 3840×2160, 1920×1080, 1440×900, 1280×1024, 1280×800, 1024×768  |         |          |          |      |       |       |       |
| Video Decoding Parameter | Support IMS client preview; Support mobile APP fast preview   |         |          |          |      |       |       |       |
| Audio                    | Support multi-screen split; 1/2/4/6/8/9/10 screen real-time preview   |         |          |          |      |       |       |       |
| Storage Management       | Support 720P/960P/1080P/3MP/4MP/5MP/4K  |         |          |          |      |       |       |       |
| Network Port             | Support Smart265/H.265/H.264 decoding   |         |          |          |      |       |       |       |
| External Port            | NVR synchronous playback 4CH (1*4K); IMS client support maximum 4CH remote video playback   |         |          |          |      |       |       |       |
| User Management          | Standard G.711; Support HDMI audio output, audio output (3.5mm jack), audio input (3.5mm jack), and IMS client audio and video preview and playback   |         |          |          |      |       |       |       |
| Front Panel              | Support timing recording, alarm recording, timing and alarm recording; Alarm recording includes (Motion detection, Human detection, Line-crossing detection, Vehicle retrograde, Staff absence, Loitering, Area intrusion, Vehicle illegal parking) |         |          |          |      |       |       |       |
| Buzzer                   | Support external USB storage device (such as ordinary U disk, mobile hard disk) backup  |         |          |          |      |       |       |       |
| Service Function         | 2 SATA, each SATA maximum support 16TB hard disk (2pcs*16TB)  |         |          |          |      |       |       |       |
| Working Temperature      | 1 RJ45 Ethernet port, 10/100M adaptive; Support TCP/IP, IPv4, DHCP, NTP, RTSP, ONVIF, P2P, SMTP, GB28181 ect. network protocol.   |         |          |          |      |       |       |       |
|                          | 3 USB2.0 (rear 2, front 1); Support mouse, USB upgrade, import and export   |         |          |          |      |       |       |       |
|                          | Maximum support 32 local user   |         |          |          |      |       |       |       |
|                          | Support power, recording, network transmission 3 status indicator   |         |          |          |      |       |       |       |
|                          | Support buzzer alarm  |         |          |          |      |       |       |       |
|                          | Support preview, recording, forwarding, and remote service, alarm linkage, and IMS client remote monitoring software. Support P2P cloud service   |         |          |          |      |       |       |       |

|                   |  |
|-------------------|--|
| Front Panel       | Support power, network transmission 2 status indicator |
| Working Humidity  | 10%~90%  |
| Power             | DC +12V/2A   |
| Power Consumption | ≤30W   |
| Alarm Port        | /  |
| Size (mm)         | 210*255*42mm(W×L×H)                                    |

## FEATURES

- Support 36CH IPC input (8MP/D1+36CH Preview+9CH Playback)
- Support Smart265, H265, H264 decoding format
- Support synchronized recording, remote view, backup recording in MP4 format, mobile view
- Support VGA/HDMI output
- Support preview image and playback image electronic amplification
- Support standard ONVIF, RTSP, GB28181 protocol
- Support RTMP
- Support alarm capture, alarm email sending function
- Support DDNS、UPNP、NTP、P2P...etc
- Support WEB, mobile view, IMS surveillance
- Support IPC smart analysis: Line-crossing detection, Vehicle retrograde, Staff absence, Loitering, Area intrusion, Vehicle illegal parking
- Support channel cruise grouping
- Support network inspection: network traffic monitoring, network diagnosis...etc
- Support maximum 9CH synchronous playback
- Support fast booting
- New UI interface, smooth operation
- Support 36CH 4K decoding and 4K display output
- Support to add IPC manually or automatically in LAN
- Support to upgrade IPC online and by U disk
- Support to maintain IPC under private protocol, including restore, restart, enable or disable all netcom function
- New optimization, high quality compatibility with hard disk on the market
- Support ANR(Automatic Network Replenishment) function
- Support select the video stream mode
- Optimize incoming bandwidth up to 150M

**\*\* Images are for illustrative purposes only and may not represent the actual product.**