

**PROJECT SERIES**

**MODEL NO : UV-IVR-NR464**

**UNIWORLD PREMIUM 64 CH 4K IVR**  
with 4 SATA & 512 Mbps Bandwidth



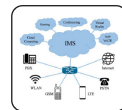
HIGH EFFICIENCY VIDEO CODING



ONVIF SUPPORT



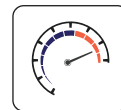
SMART LINK



IP MULTIMEDIA SUBSYSTEM (IMS)



APP



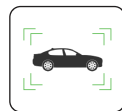
64CH 512 Mbps



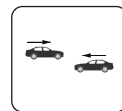
TWO WAY AUDIO



HUMAN DETECTION



VEHICLE DETECTION



RETROGRADE



VEHICLE DETECTION



4 SATA UPTO 16TB

**INTRODUCTION**

H.265+ 64CH IVR, support 64 CH 4K IP camera input and output, support smart analysis IPC, 4 pcs HDD (max 16TB), 1CH VGA, 1 CH HDMI, 3 USB, support to upgrade IPC remote, modify IP camera address and light board parameters, support alarm and audio, support mobile view, Support IO alarm 4CH input and 4CH output.

- Support 36 Channels IPC input (8MP/D1+36 CH Preview+16CH playback)
- Support 64 Channels IPC input (8MP/D1+64 CH Preview+16CH playback)
- Support H265,H264,H265+ compression format
- Support synchronized recording,remote view,backup recording in MP4 format, mobile view
- Support VGA/HDMI
- Support preview image and playback image electronic amplification
- Support RTSP,GB28181,ONVIF protocol
- Support HTTP,RTMP
- Support alarm capture,send alarm information by email
- Support DDNS,UPNP,NTP,P2P...etc
- Support WEB, mobile view,IMS surveillance
- Support IPC smart analysis: area intrusion,loitering, line-crossing detection, illegal vehicle detection, absence detection, retrograde detection
- Support network inspection-network traffic monitor, ether-detect packet, network diagnosis...etc
- Support max 4CH 1080P playback and 16CH sub-code playback
- Support HTML5 remote login operation
- Support to add IPC manually or automatically in LAN
- Support to upgrade IPC online and by memory
- Support to maintain IPC under private protocol, including restore, restart, enable or disable all network function
- Support disconnected network supplement function, optimize bandwidth incoming up to 380 Mbps
- Support 64 split screens.

## Functions

Channel connection protocol	RTSP、SLINK (private protocol) 、ONVIF、I9							
Mobile APP	Support Android and IOS							
Display mode	36 CH input (8MP/D1+36 CH Preview+16CH playback)							
Smart analysis	area in trusion,loitering, line-crossing detection, illegal vehicle detection, absence detection, retrograde detection							
<b>Video</b>								
Normal mode	36CH normal IPC							
Split	1	4	6	8	16	25	36	64
Decode	4k	4*1080P	5MP+5*D1	3MP+7*D1	16*D1	25*D1	36*D1	64*D1
Bandwidth	512Mbps							
Video compression	H265+/H.265 /H.264							
Recording resolution	4K/1080P/720P/D1							

<b>Recording and playback</b>	
Recording method	manual, schedule, motion detection, timing, alarm, stop
Playback	1 CH 4K, 4CH 1080P, 16CH D1
Playback mode	Regular playback, event playback
<b>Storage and backup</b>	
Storage Port	4 pcs SATA
HDD capacity	Max 16TB
Storage path	Local hard disk
Backup method	USB portable HDD, Memory flash
<b>External Port</b>	
Audio Input	1 pcs 3.5mm TRS port
Audio Output	1 pcs 3.5mm TRS port
Series Port	1 pcs RS485 port
USB port	3 pcs USB 2.0
Network port	2 pcs RJ 45 1000M Port
Alarm input	4 CH
VGA	1 pcs
HDMI	1 pcs
<b>General</b>	
Power	DC12V8A
Power consumption	≤60W
Working temperature & humidity	-10°C ~ 55°C/10 -90
Size	Device: 440 X 355 X 70 mm

**\*\* Images are for illustrative purposes only and may not represent the actual product.**